



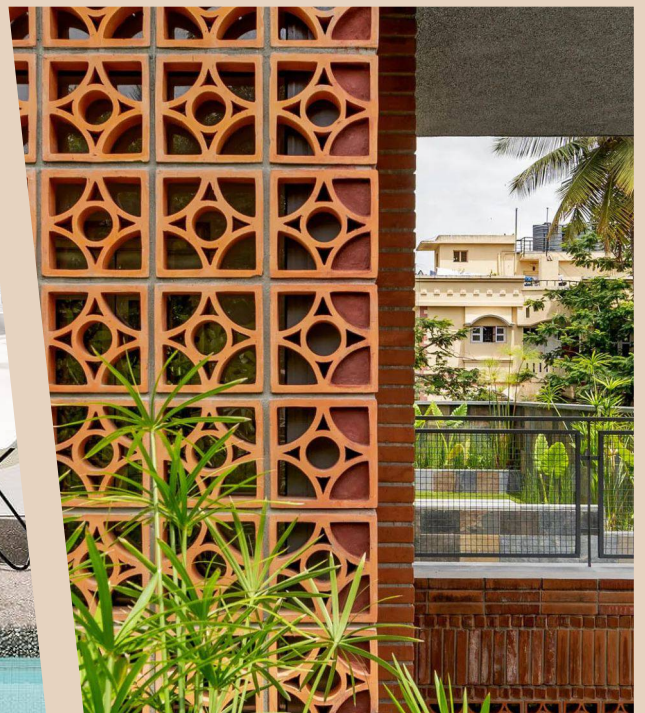
CREATAS
INTERNATIONAL

**VISUALLY
IMPACTFUL**

JALI COLLECTION

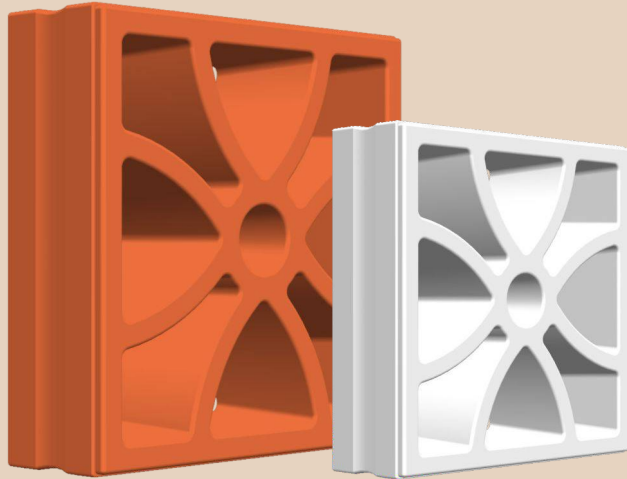


CREATAS
INTERNATIONAL





CREATAS
INTERNATIONAL



Petal

Available color

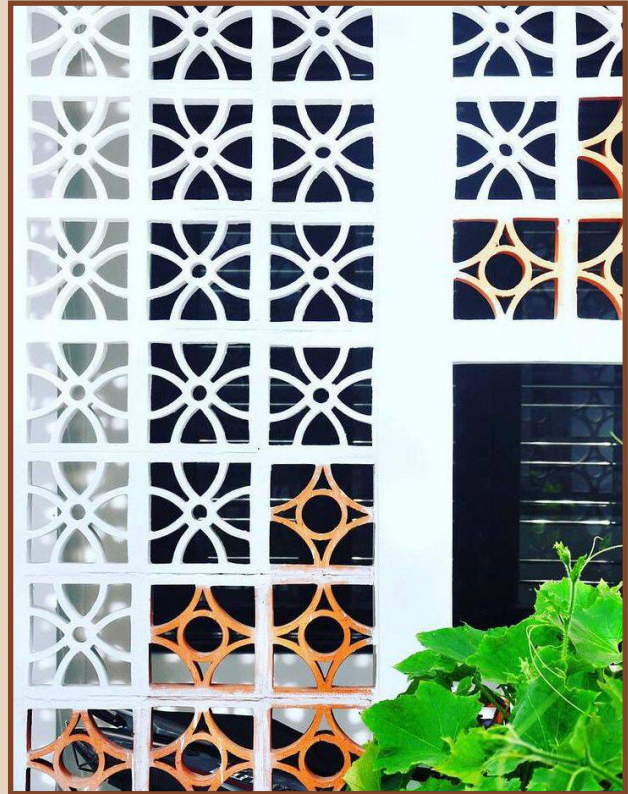
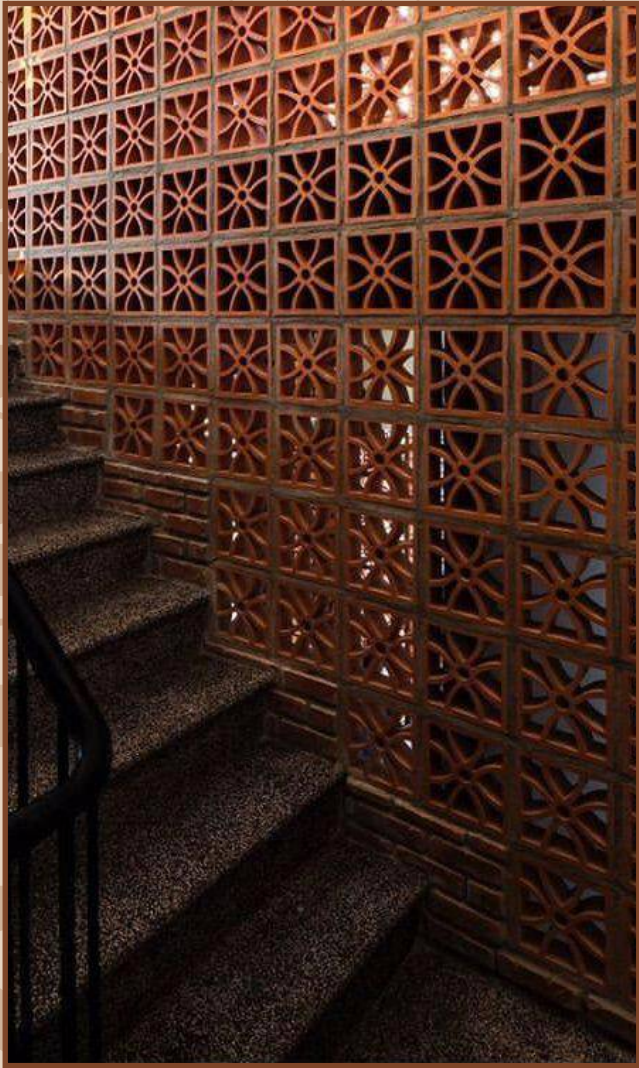


Size	Thickness	Weight/piece	Packing	Weight/box
200x200mm	60mm	2.4 kg	5 piece/Box	12 kg

Requirement per sq.ft = 2.25 Nos

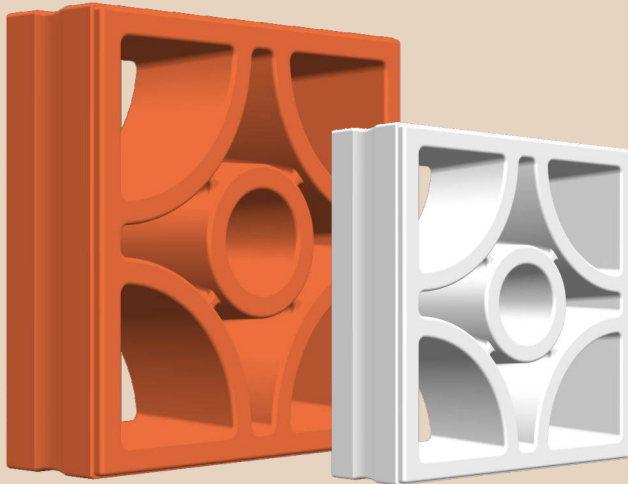


CREATAS
INTERNATIONAL





CREATAS
INTERNATIONAL



Opal

Available color

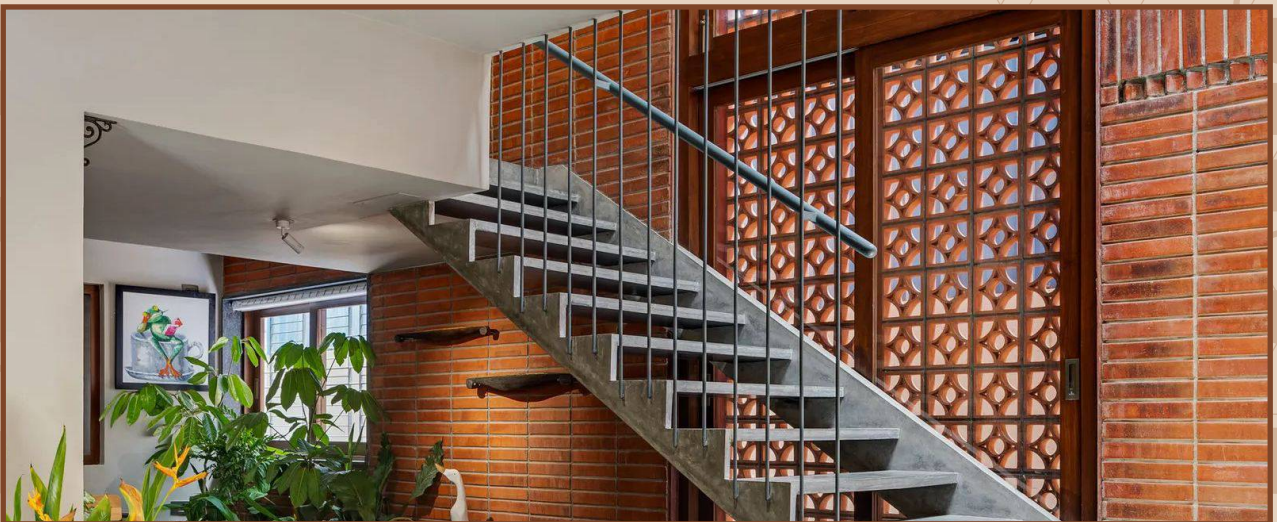
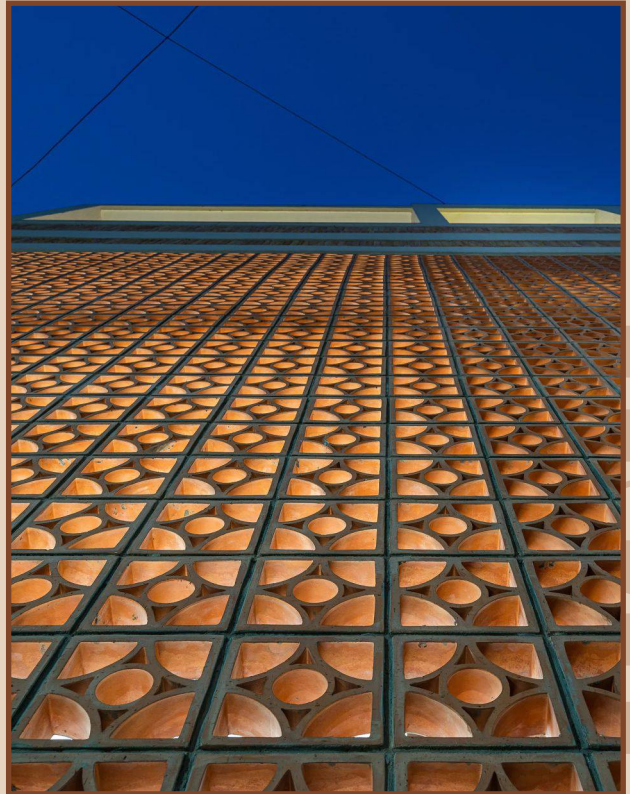


Size	Thickness	Weight/piece	Packing	Weight/box
200x200mm	60mm	2.4 kg	5 piece/Box	12 kg

Requirement per sq.ft = 2.25 Nos

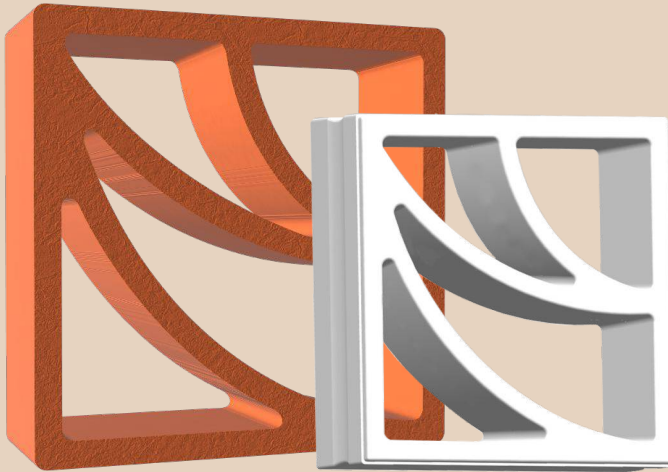


CREATAS
INTERNATIONAL





CREATAS
INTERNATIONAL



Lotus

Available color



Size	Thickness	Weight/piece	Packing	Weight/box
200x200mm	60mm	2.4 kg	5 piece/Box	12 kg

Requirement per sq.ft = 2.25 Nos

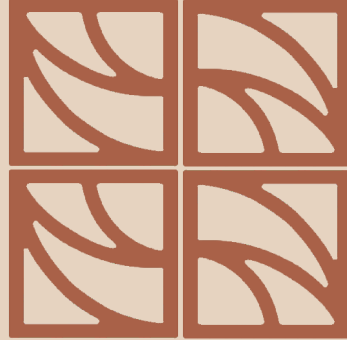


CREATAS
INTERNATIONAL

PATTERN 01



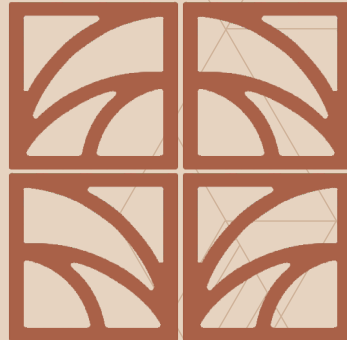
PATTERN 04



PATTERN 02



PATTERN 05



PATTERN 03



PATTERN 06





CREATAS
INTERNATIONAL

PATTERN 07



PATTERN 08





CREATAS
INTERNATIONAL



BRANDZ

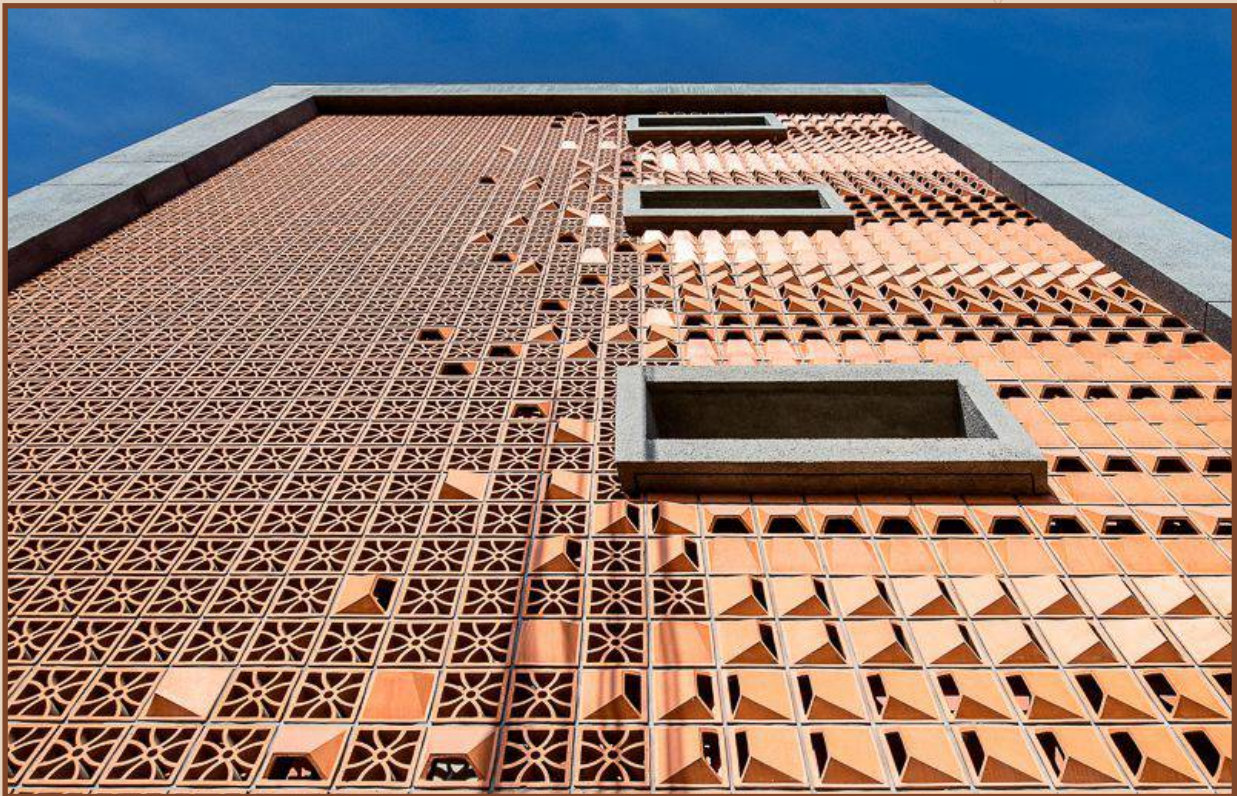


CREATAS
INTERNATIONAL



Wing

Available color



Size	Thickness	Weight/piece	Packing	Weight/box
200x200mm	60mm	2.4 kg	5 piece/Box	12 kg

Requirement per sq.ft = 2.25 Nos



CREATAS
INTERNATIONAL



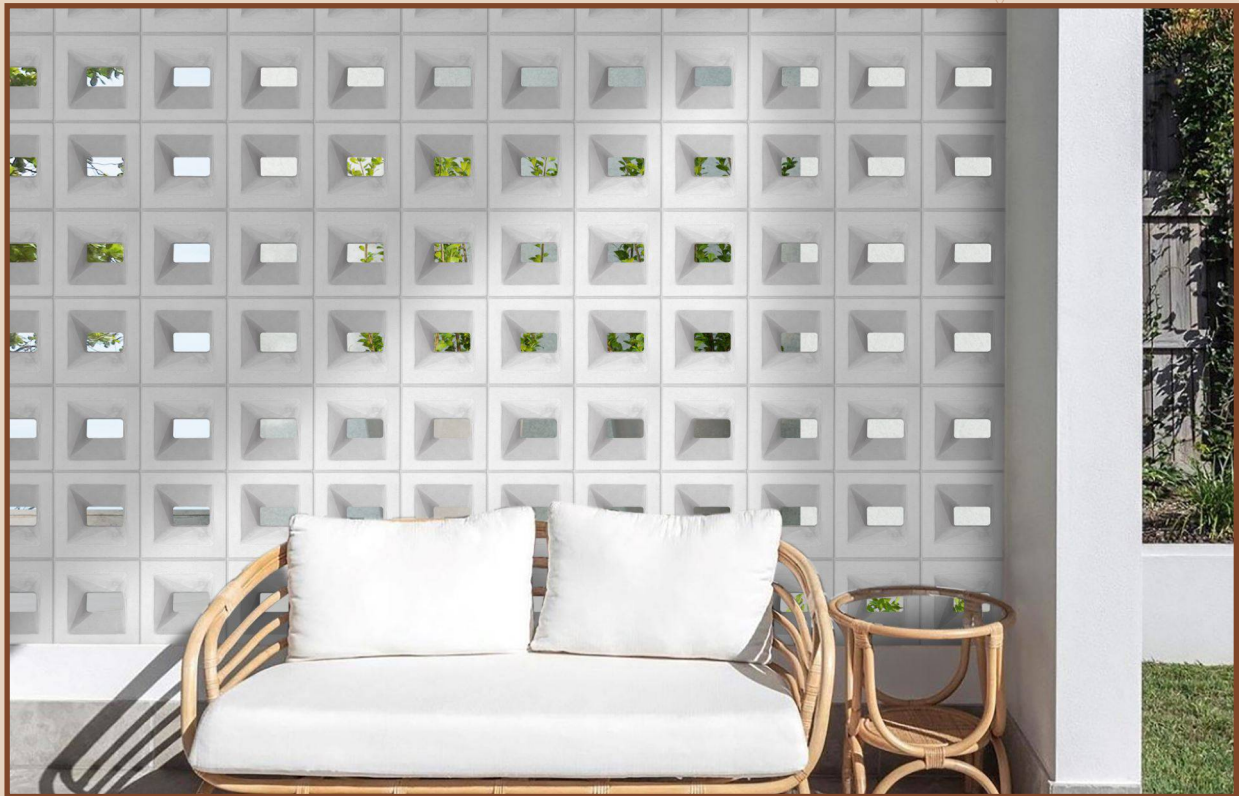


CREATAS
INTERNATIONAL



Sierra

Available color

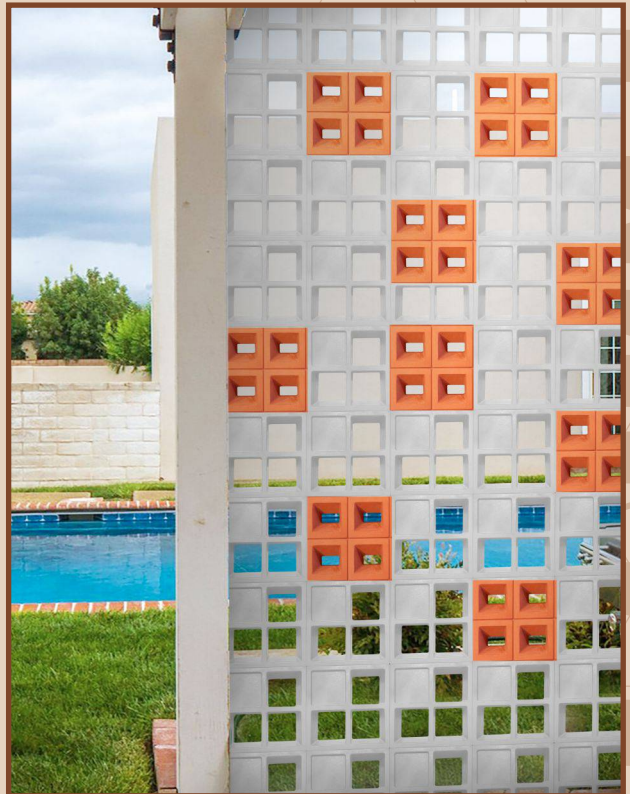
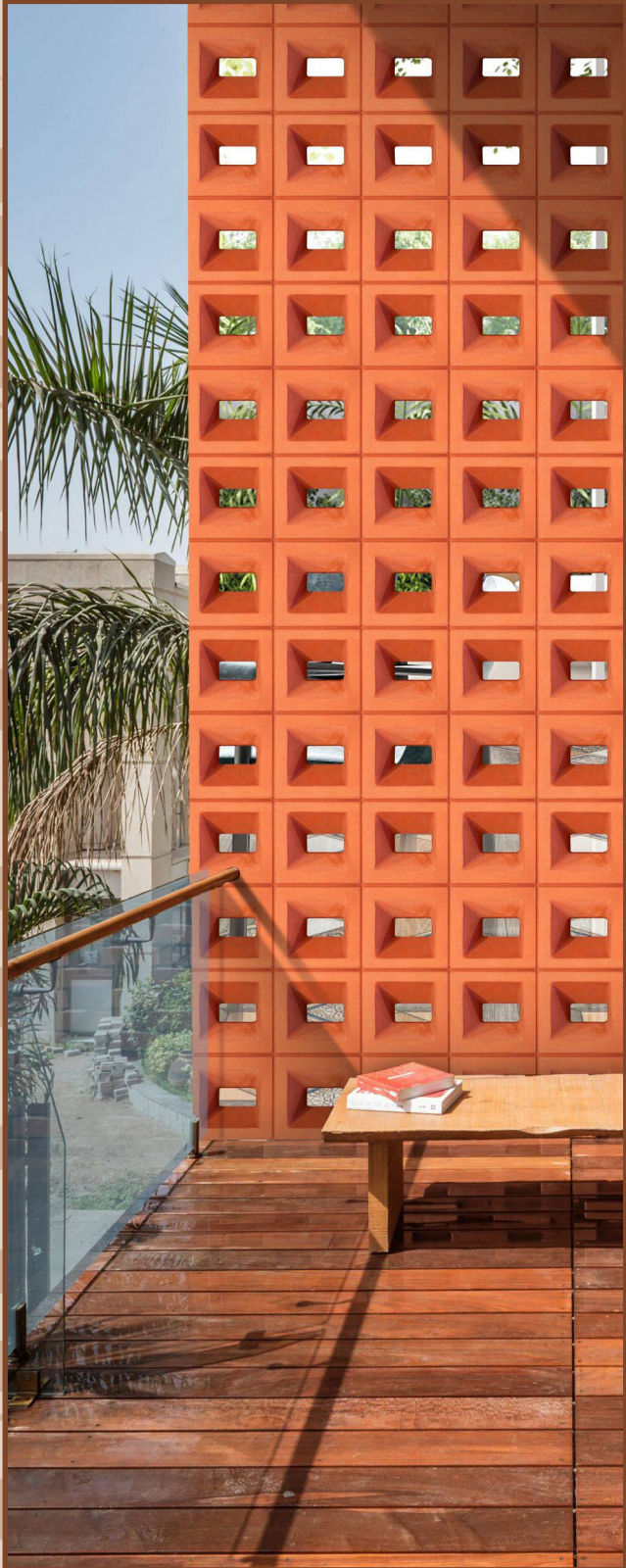


Size	Thickness	Weight/piece	Packing	Weight/box
200x200mm	60mm	2.4 kg	5 piece/Box	12 kg

Requirement per sq.ft = 2.25 Nos

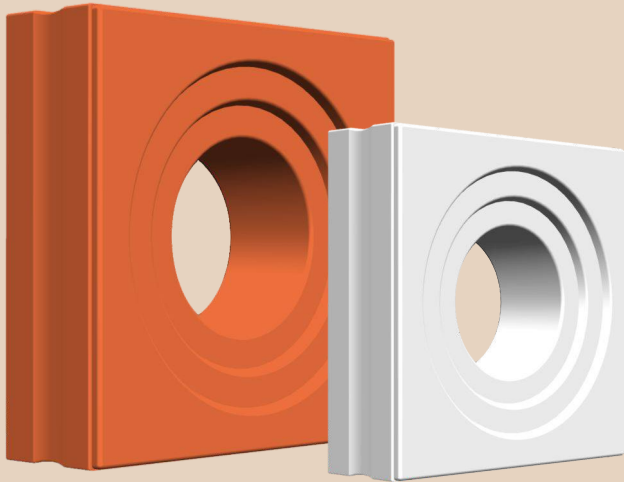


CREATAS
INTERNATIONAL





CREATAS
INTERNATIONAL



Curl

Available color



Size	Thickness	Weight/piece	Packing	Weight/box
200x200mm	60mm	4 kg	5 piece/Box	20 kg

Requirement per sq.ft = 2.25 Nos



CREATAS
INTERNATIONAL





CREATAS
INTERNATIONAL



Blink

Available color

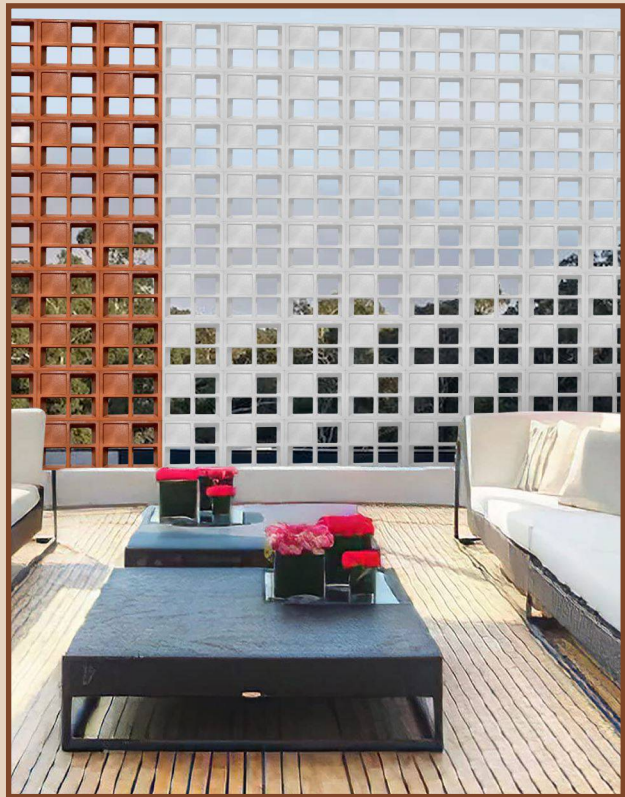


Size	Thickness	Weight/piece	Packing	Weight/box
200x200mm	60mm	2.4 kg	5 piece/Box	12 kg

Requirement per sq.ft = 2.25 Nos

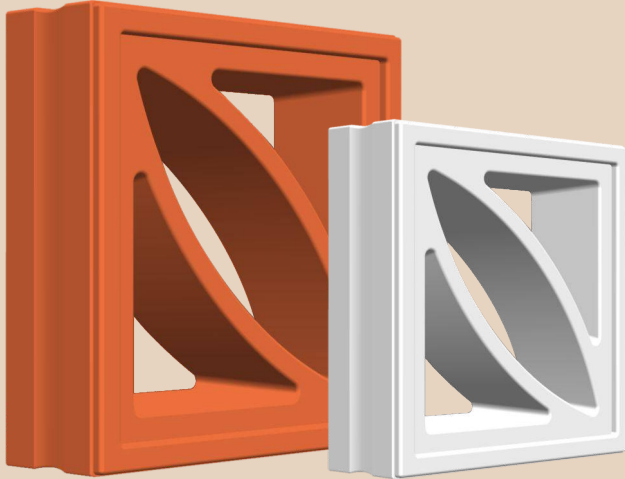


CREATAS
INTERNATIONAL





CREATAS
INTERNATIONAL



Lily

Available color

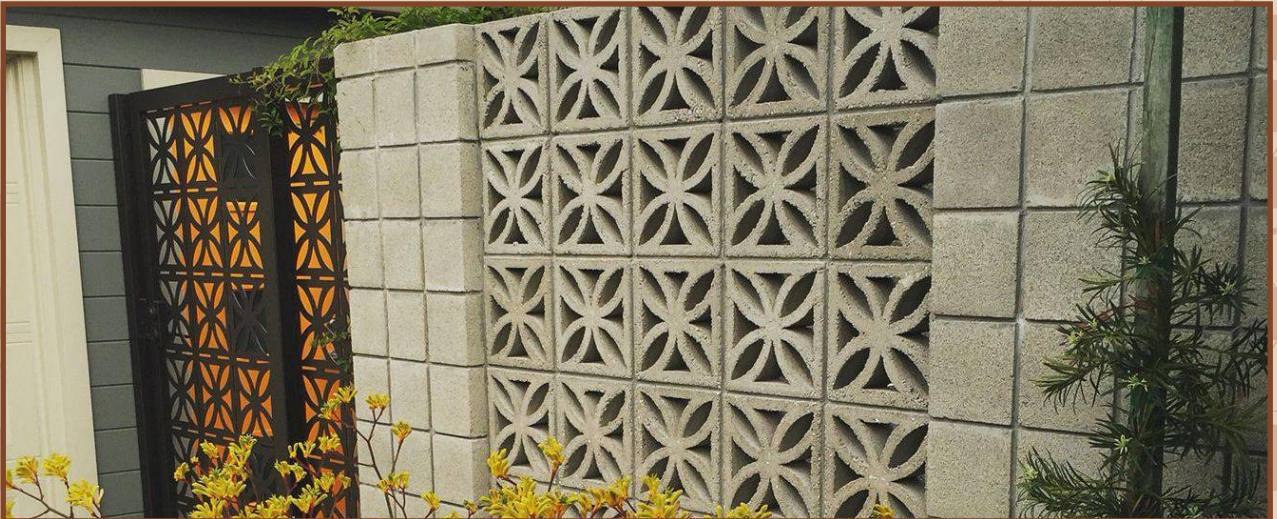


Size	Thickness	Weight/piece	Packing	Weight/box
200x200mm	60mm	2.7 kg	5 piece/Box	13.5 kg

Requirement per sq.ft = 2.25 Nos



CREATAS
INTERNATIONAL





CREATAS
INTERNATIONAL



Santo

Available color

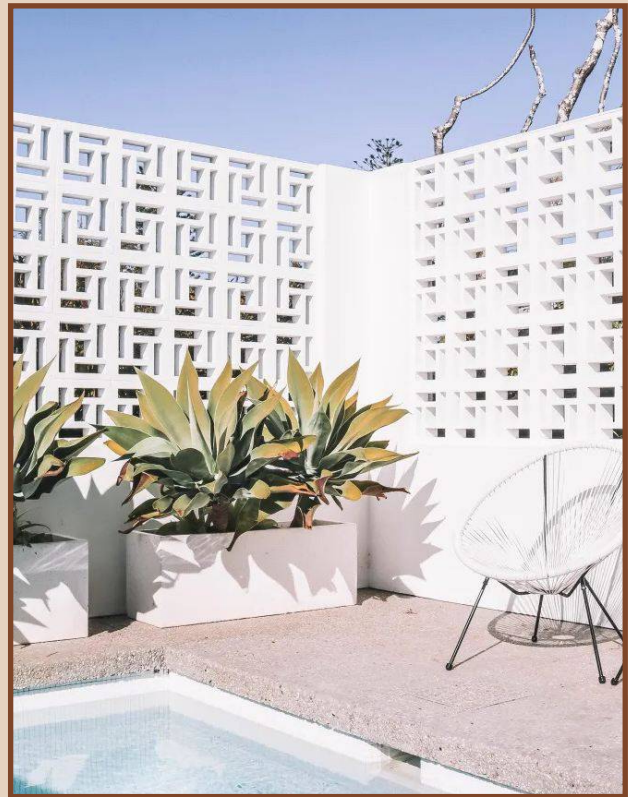


Size	Thickness	Weight/piece	Packing	Weight/box
200x200mm	60mm	2.4 kg	5 piece/Box	12 kg

Requirement per sq.ft = 2.25 Nos

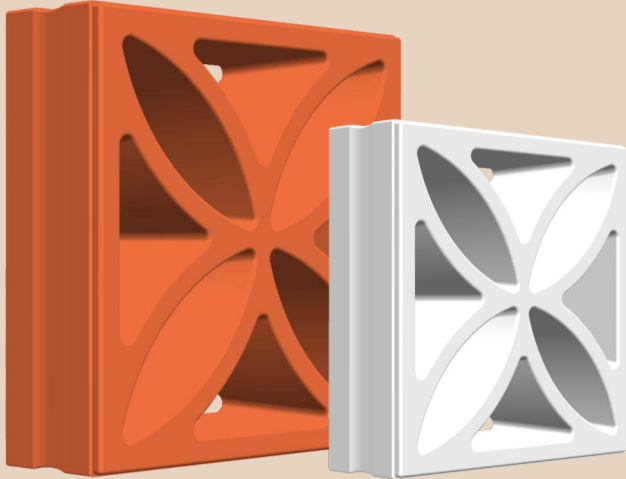


CREATAS
INTERNATIONAL





CREATAS
INTERNATIONAL



Orchid

Available color

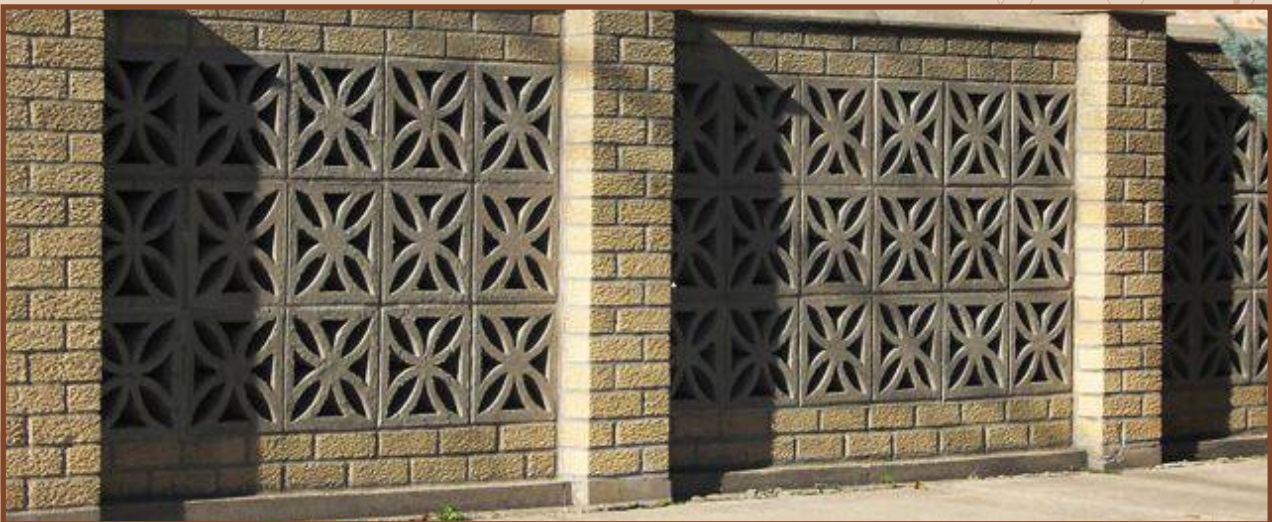


Size	Thickness	Weight/piece	Packing	Weight/box
200x200mm	60mm	2.6 kg	5 piece/Box	13 kg

Requirement per sq.ft = 2.25 Nos

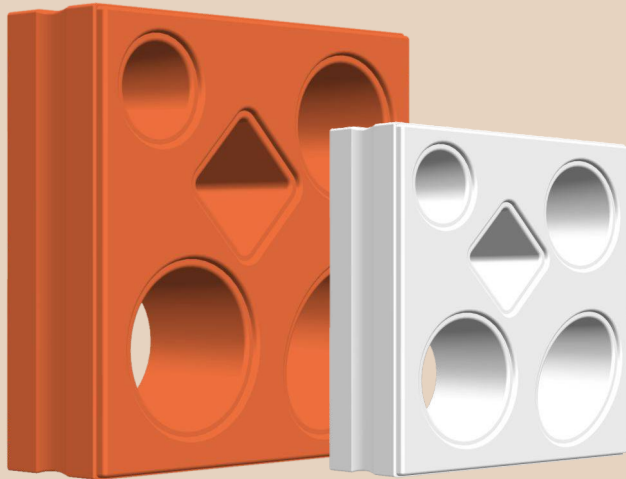


CREATAS
INTERNATIONAL



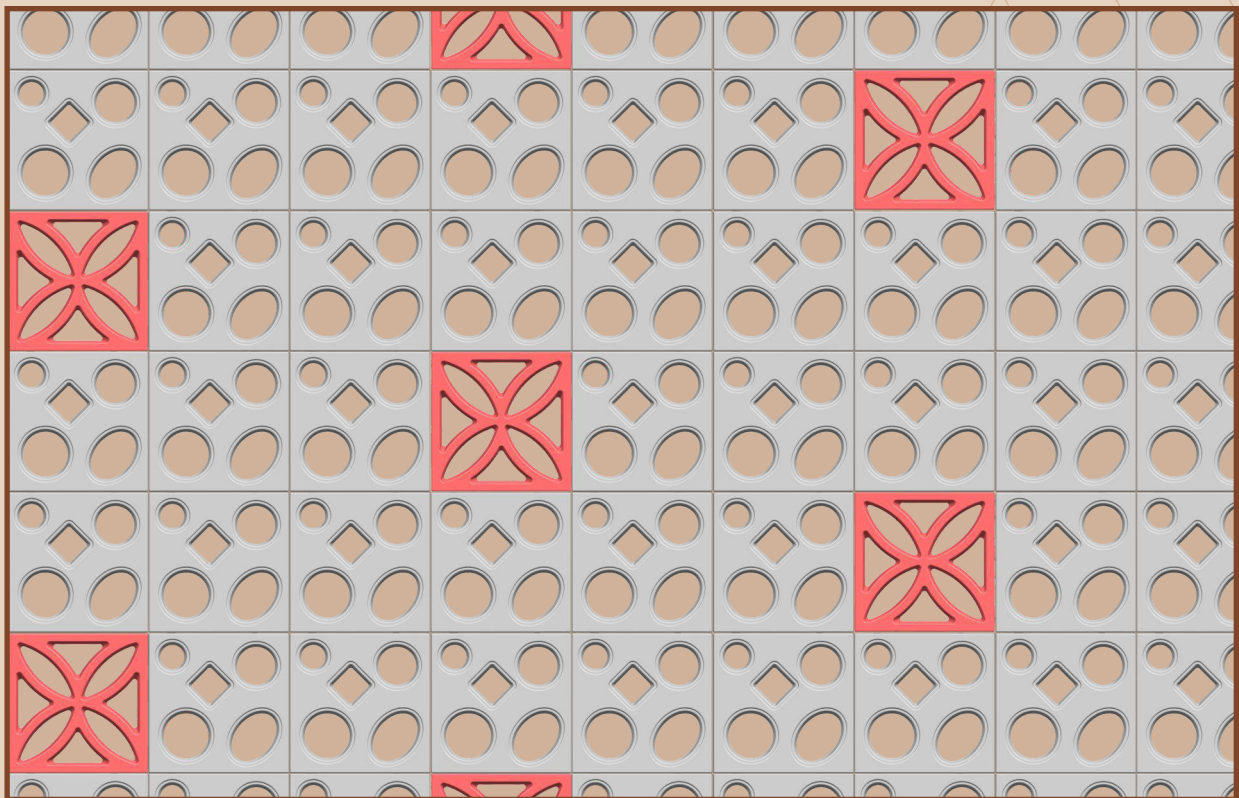


CREATAS
INTERNATIONAL



Speara

Available color

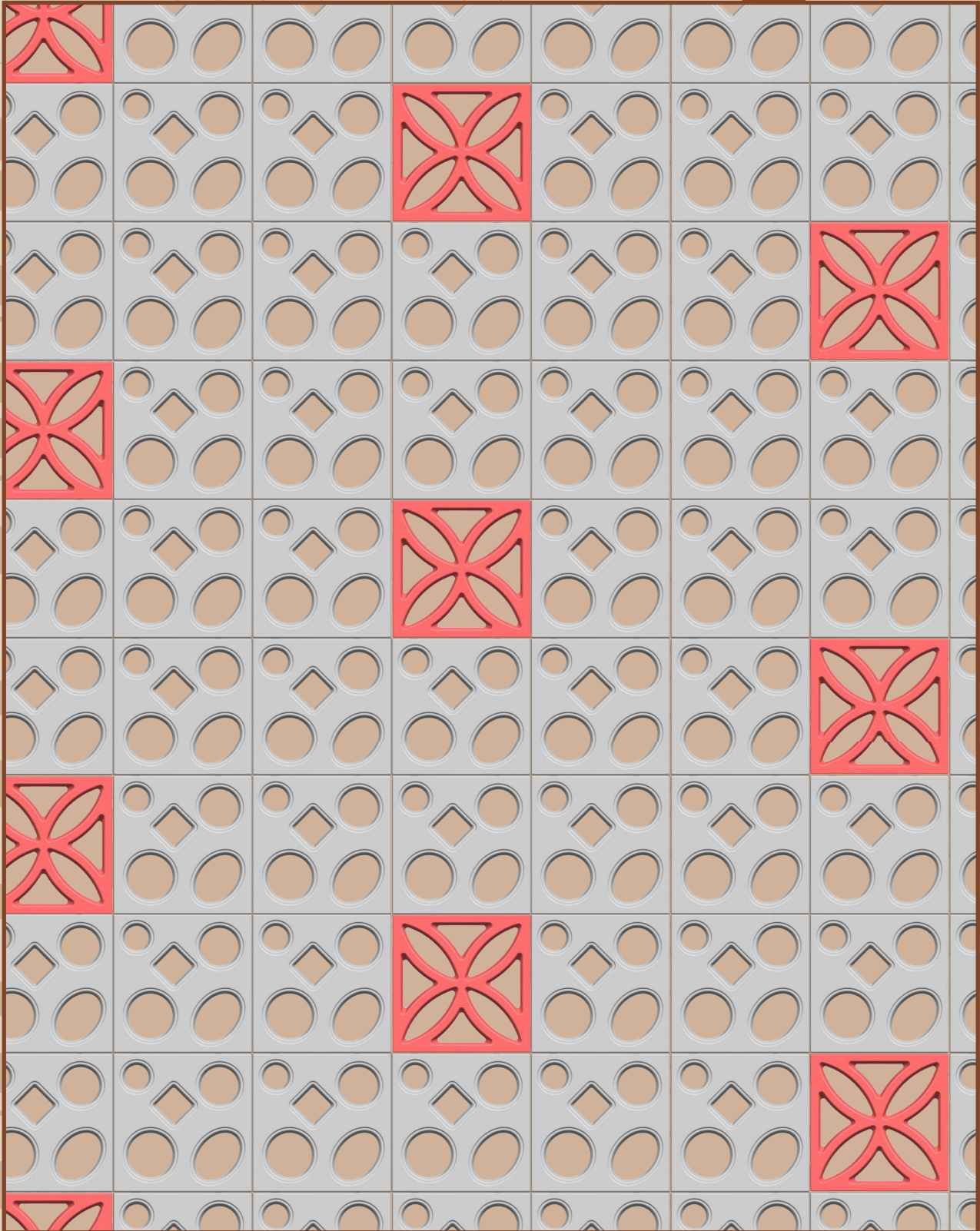


Size	Thickness	Weight/piece	Packing	Weight/box
200x200mm	60mm	3.3 kg	5 piece/Box	16.5 kg

Requirement per sq.ft = 2.25 Nos

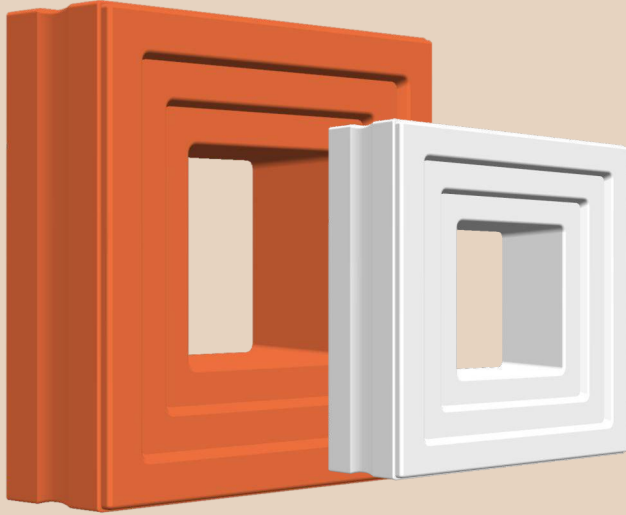


CREATAS
INTERNATIONAL





CREATAS
INTERNATIONAL



Spectra

Available color



Size	Thickness	Weight/piece	Packing	Weight/box
200x200mm	60mm	3.7 kg	5 piece/Box	18.5 kg

Requirement per sq.ft = 2.25 Nos

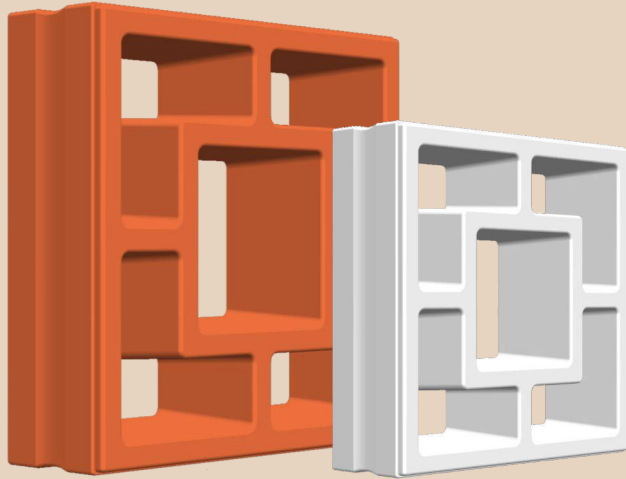


CREATAS
INTERNATIONAL





CREATAS
INTERNATIONAL



Town Square

Available color



Size	Thickness	Weight/piece	Packing	Weight/box
200x200mm	60mm	2.9 kg	5 piece/Box	14.5 kg

Requirement per sq.ft = 2.25 Nos



CREATAS
INTERNATIONAL



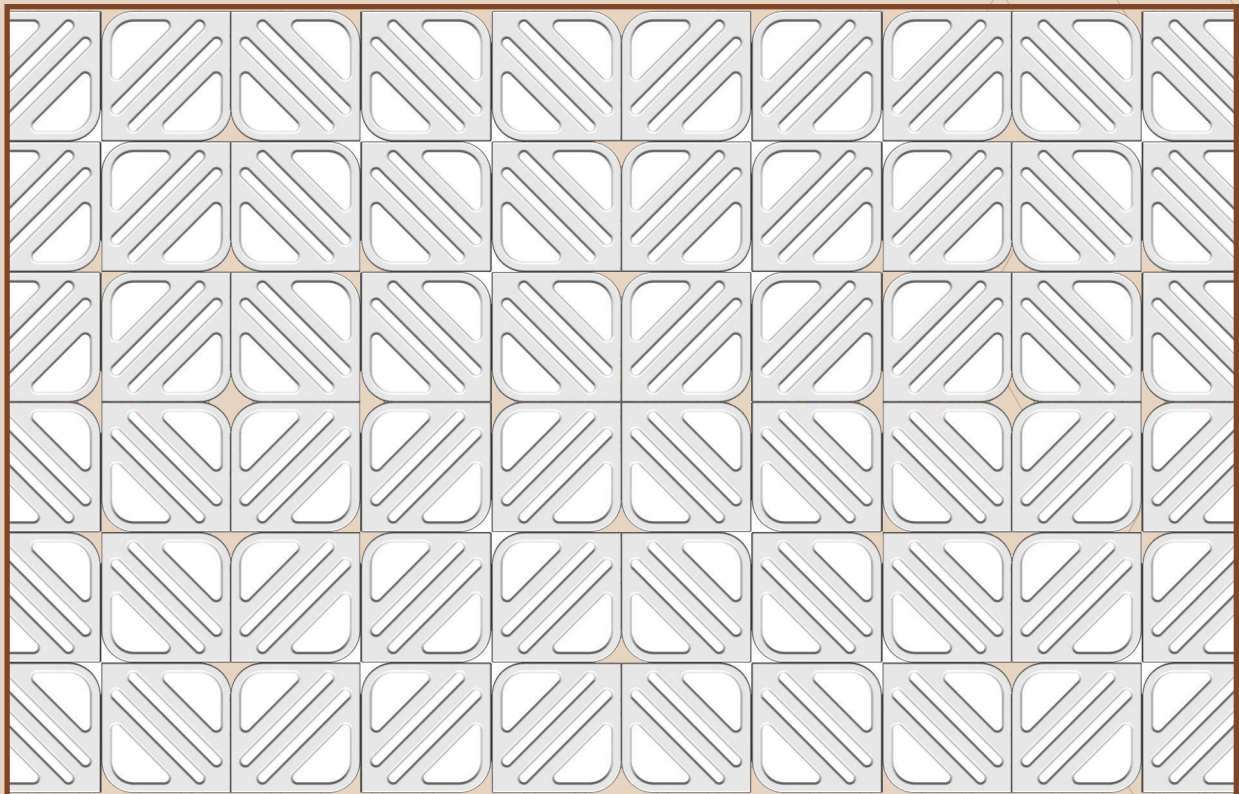


CREATAS
INTERNATIONAL



Stella

Available color

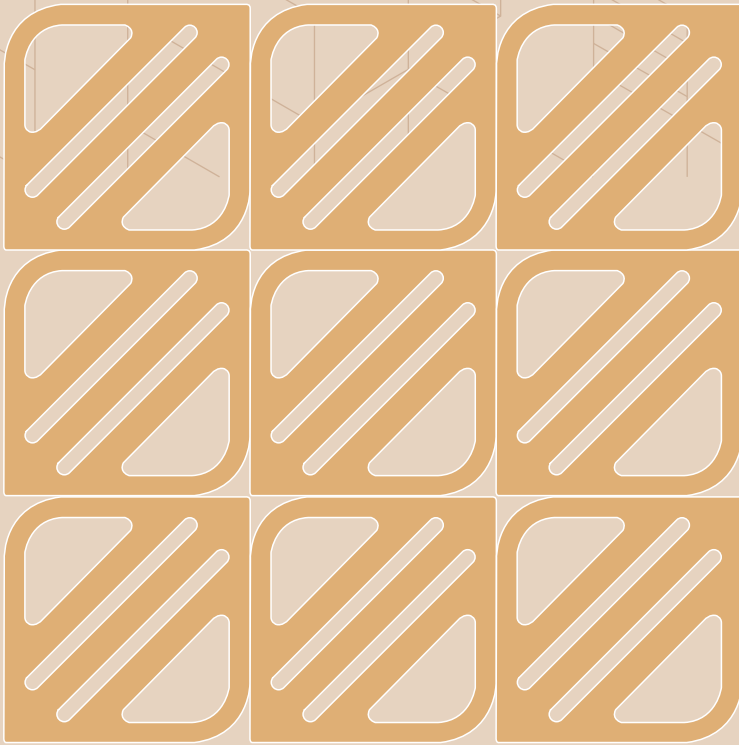


Size	Thickness	Weight/piece	Packing	Weight/box
200x200mm	60mm	2.9 kg	5 piece/Box	14.5 kg

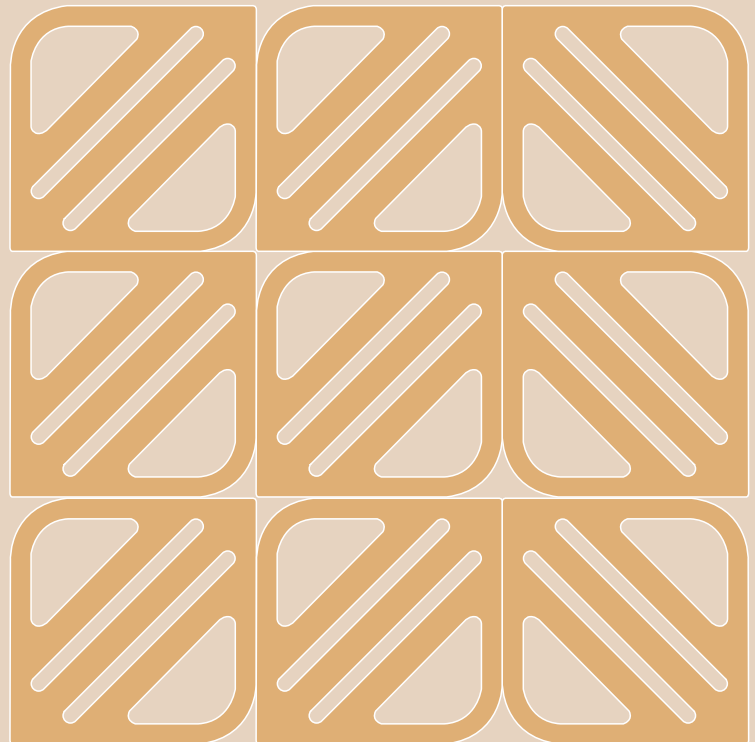
Requirement per sq.ft = 2.25 Nos



CREATAS
INTERNATIONAL



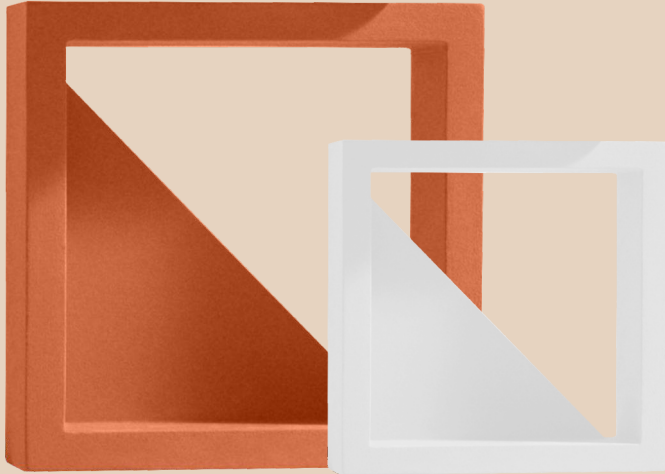
PATTERN 01



PATTERN 02



CREATAS
INTERNATIONAL



Crosstine

Available color



Size	Thickness	Weight/piece	Packing	Weight/box
200x200mm	60mm	2.4 kg	5 piece/Box	12 kg

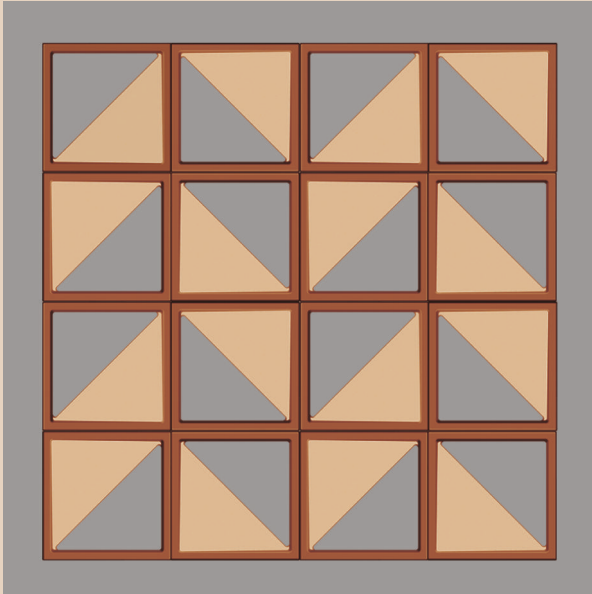
Requirement per sq.ft = 2.25 Nos



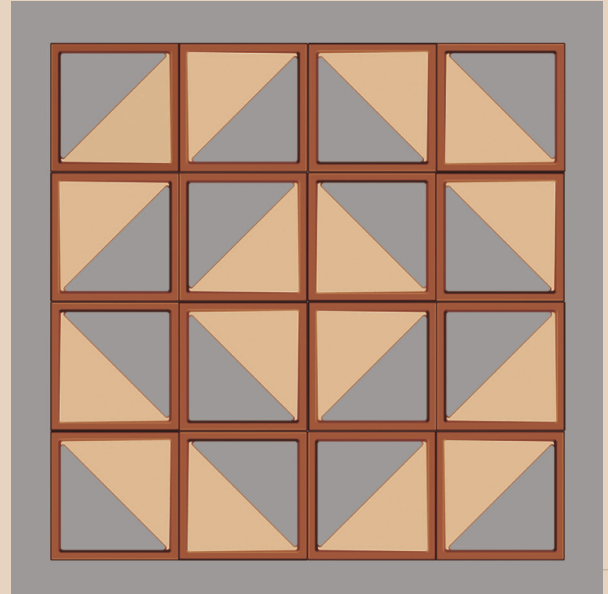
CREATAS
INTERNATIONAL



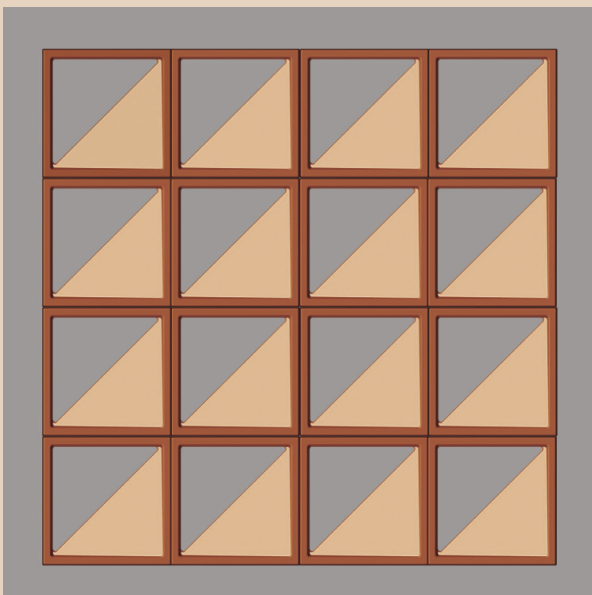
PATTERN 01



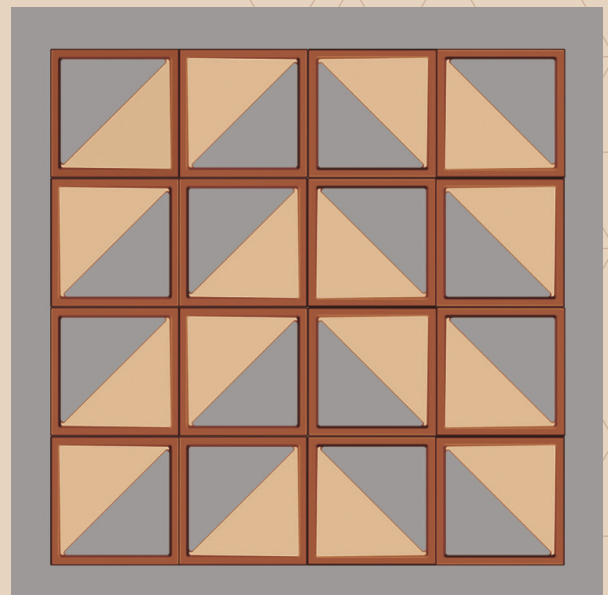
PATTERN 02



PATTERN 03



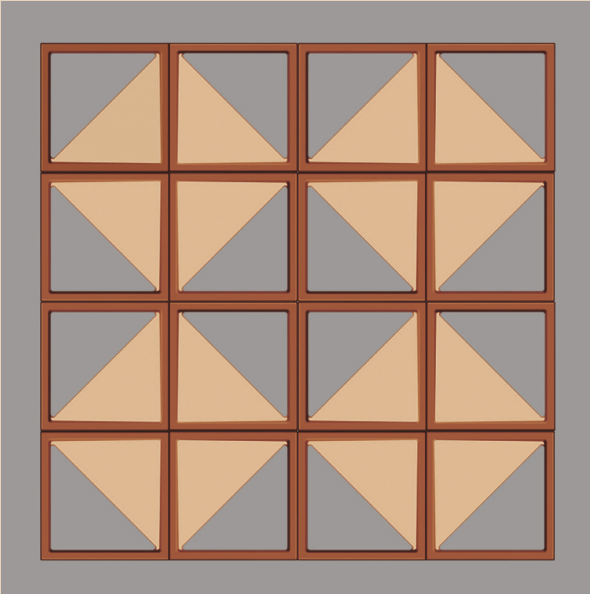
PATTERN 04



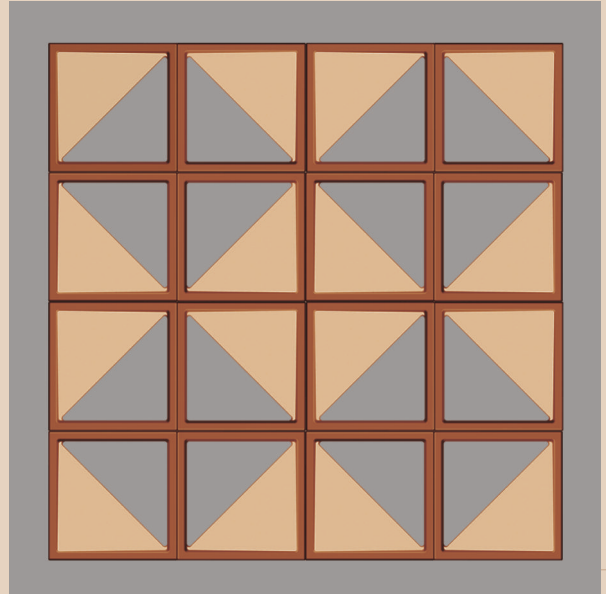


CREATAS
INTERNATIONAL

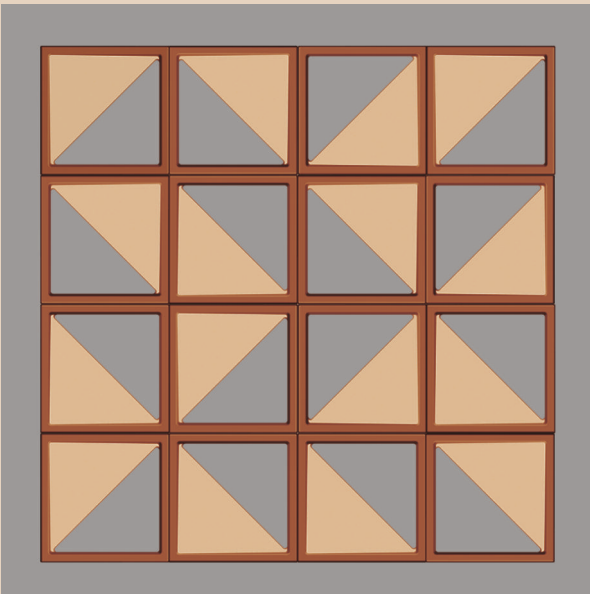
PATTERN 05



PATTERN 06



PATTERN 07





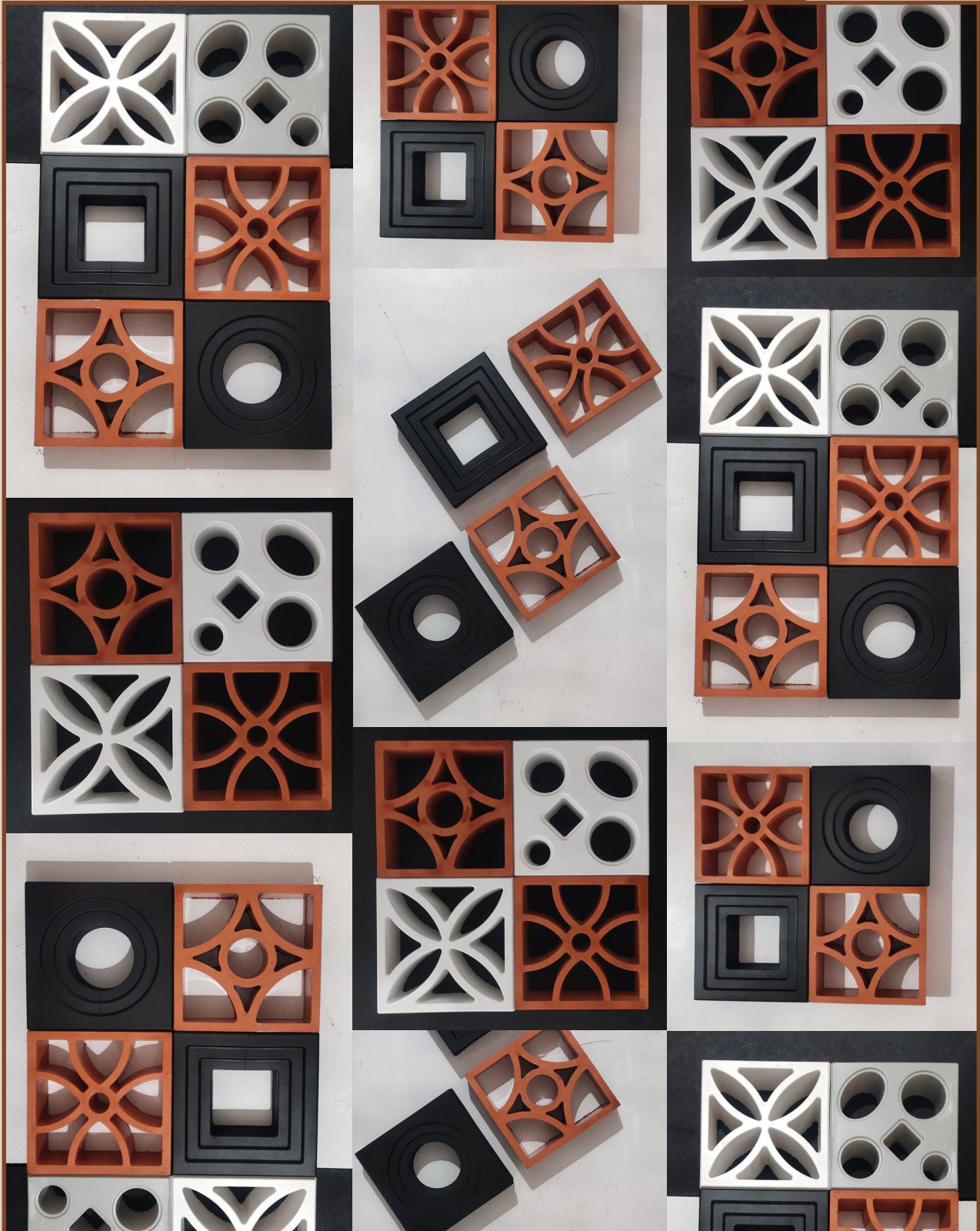
CREATAS
INTERNATIONAL





CREATAS
INTERNATIONAL

WE CAN APPLY WATER BASED
PAINT OF YOUR CHOICE





Installation Method:

- First method: It is very simple it looks like constructing bricks using cement mortar or tile adhesives, You can stack one on another and make wall of jallis.
- Second method: Actually an extension of first method if the span and the height is more you can have stiffeners in between the jallis its self weight but in order to compensate the lateral force somebody is pushing or leaning to the jallis. To have an extra mechanical support. You need have extra stiffeners between. Stiffeners can use between every three or four rows of jallis and it should be connected to both ends, either to the column or MS support you are having in the both ends of the frame.
- Third method: You can make a grid of 200 mm x 200 mm and place jalli inside that.

Note: As property of stone there may be a size variation of + or-2 mm jalli to jalli.

Important note for Jallis:

- As property of stone there may be a size variations of + or-2 mm jaali to jaali.
- An important factor you have to consider while constructing jallis is make sure you clean after every few courcers of jallis because it will become very difficulty to clean it.
- As per your design requirement you can have may be 3 or 4 mm grove in between even jallis or else you can have use the thinnest may be 1 mm tile adhesive between each jallis.

Finishing Jallis:

The jallis can also be painted in any colour of your choice and we recommend to have primer before you paint it for better Finishing. You have to manage this in the gap between the jallis in tile adhesives or cement.



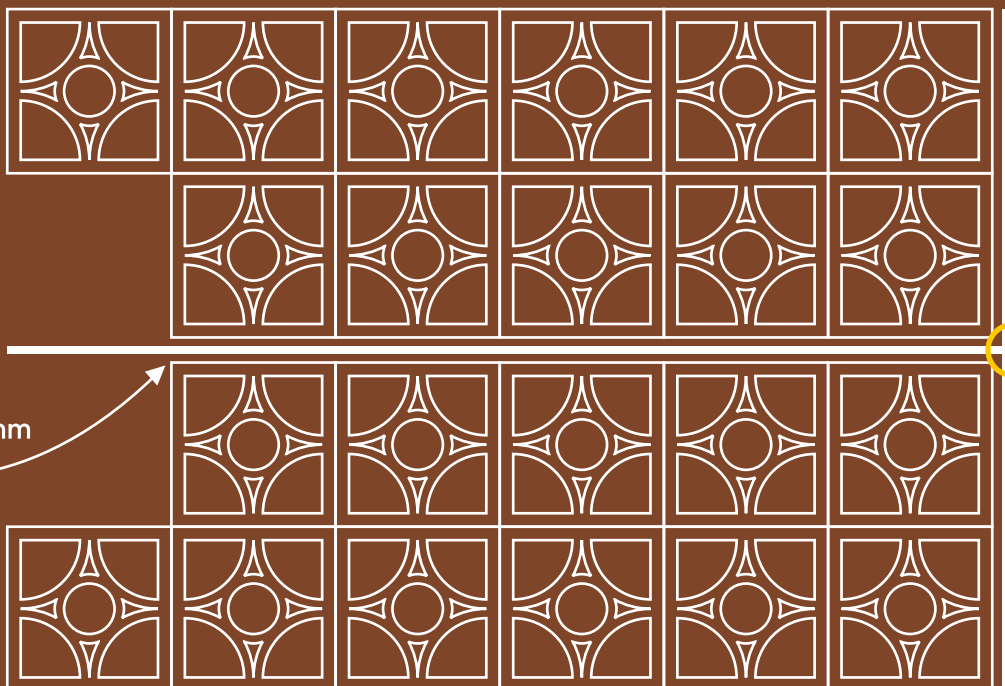
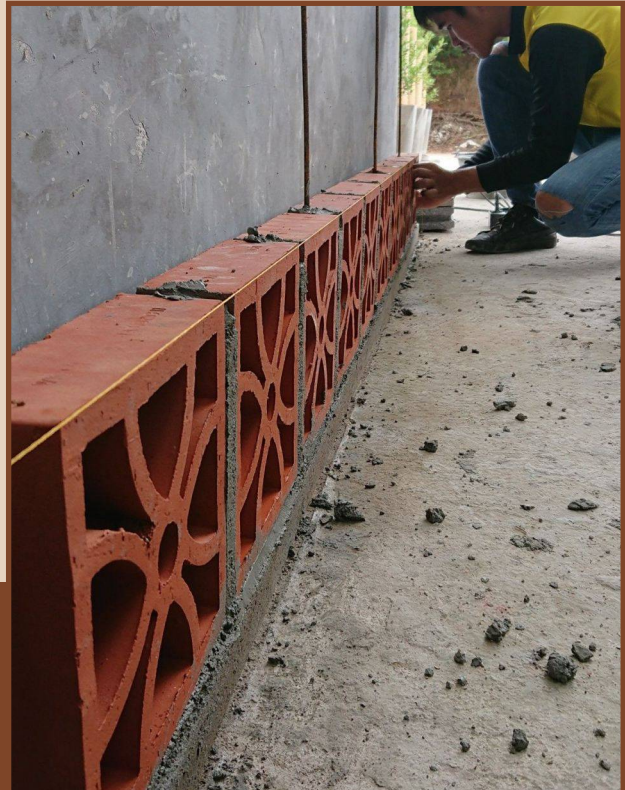
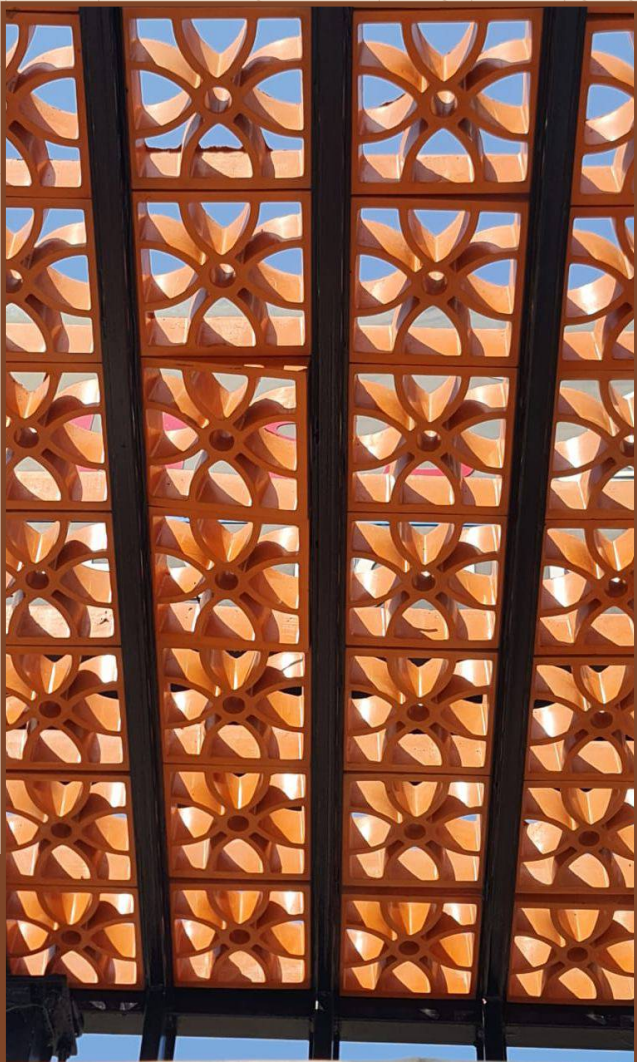
200 mm



200 x 200 x 60 mm
8 x 8 x 2.5 inches



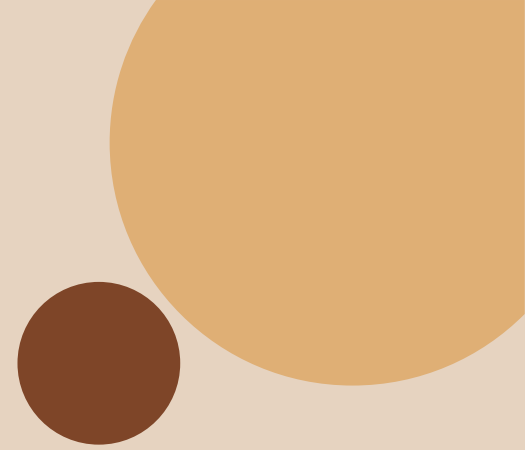
CREATAS
INTERNATIONAL



Connect to frame
or columns at both
the ends.

40mm x 5mm
MS Flat

Wall,
Concrete,
Column or
MS Column.



CREATAS
INTERNATIONAL

Email : exports@creatasint.com
Contact No : +91 9607777877
Web : www.creatasint.com

